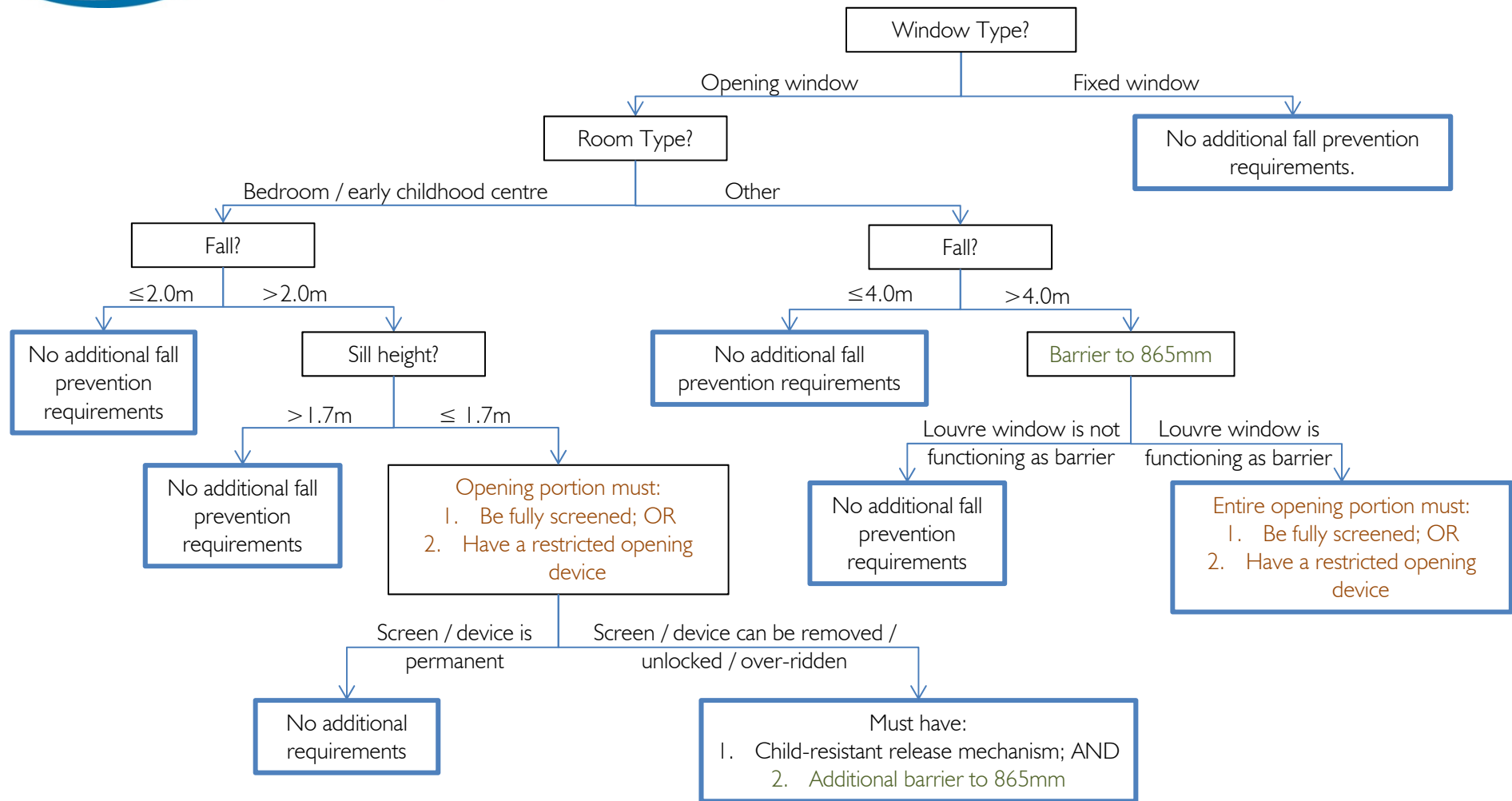




Fall Prevention Requirements Decision Tree



Screen & restricted opening devices must:

1. Prevent a 125mm sphere from passing through; AND
2. Resist a horizontal, outward force of 250N

Testing is required.

Barriers must:

1. Prevent a 125mm sphere from passing through; AND
2. Resist a horizontal, outward force of 250N; AND
3. Have no horizontal or near-horizontal climbable elements between 150mm and 760mm.

Please note: This decision tree is a representation of the requirements of Clauses 3.9.2.5 and D2.24 of the 2014 National Construction Code and is intended to be used as an aid, not as a replacement to clauses 3.9.2.5 and D2.24.